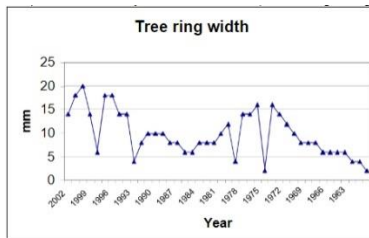




## Tree rings: a climate record of the past



In this JESEI activity students learn about how tree rings provide a record of past growing conditions and, by inference, climate. They use this principle to work out how cores from three different trees (three strips of paper marked with stripes to represent rings) fit together to represent a longer period of time, and then use this composite record to plot a graph of changing growing conditions / climate.

In class discussions, students are encouraged to consider other factors that may have influenced growth. For example: fires, pollution, erosion, landslides.

Activity details available at:

<https://geohubliverpool.org.uk/jesei/tree%20rings.htm>