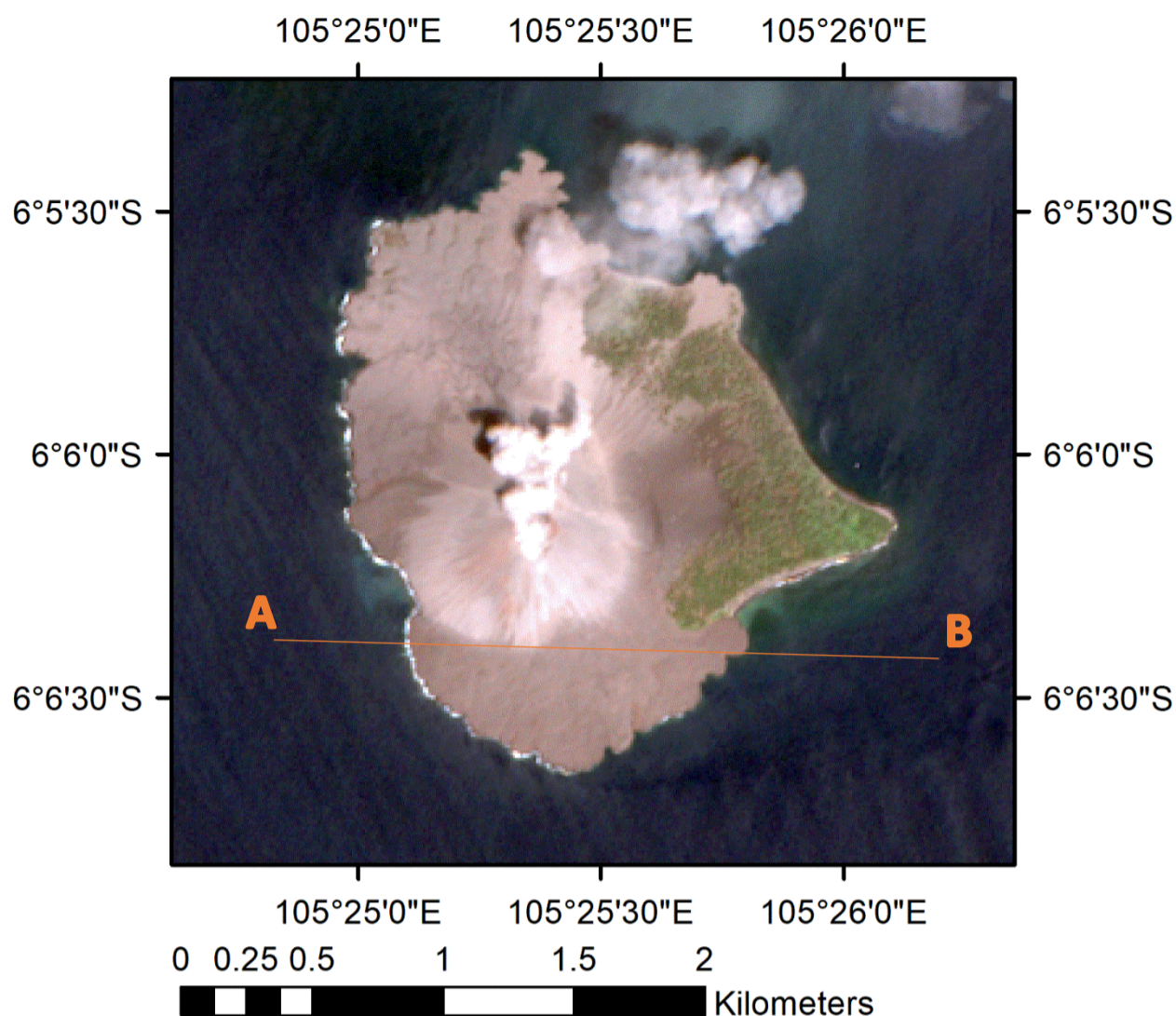
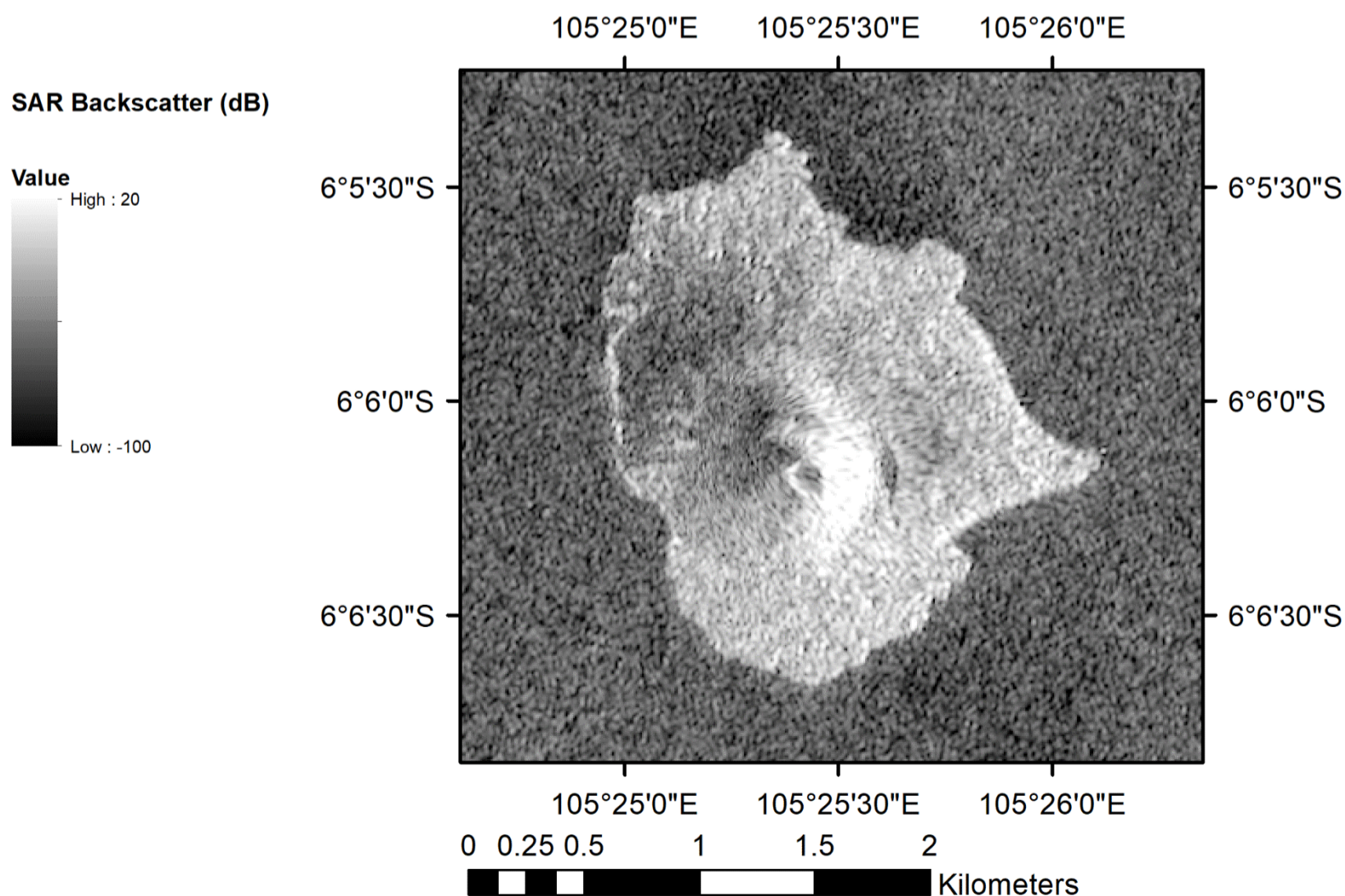


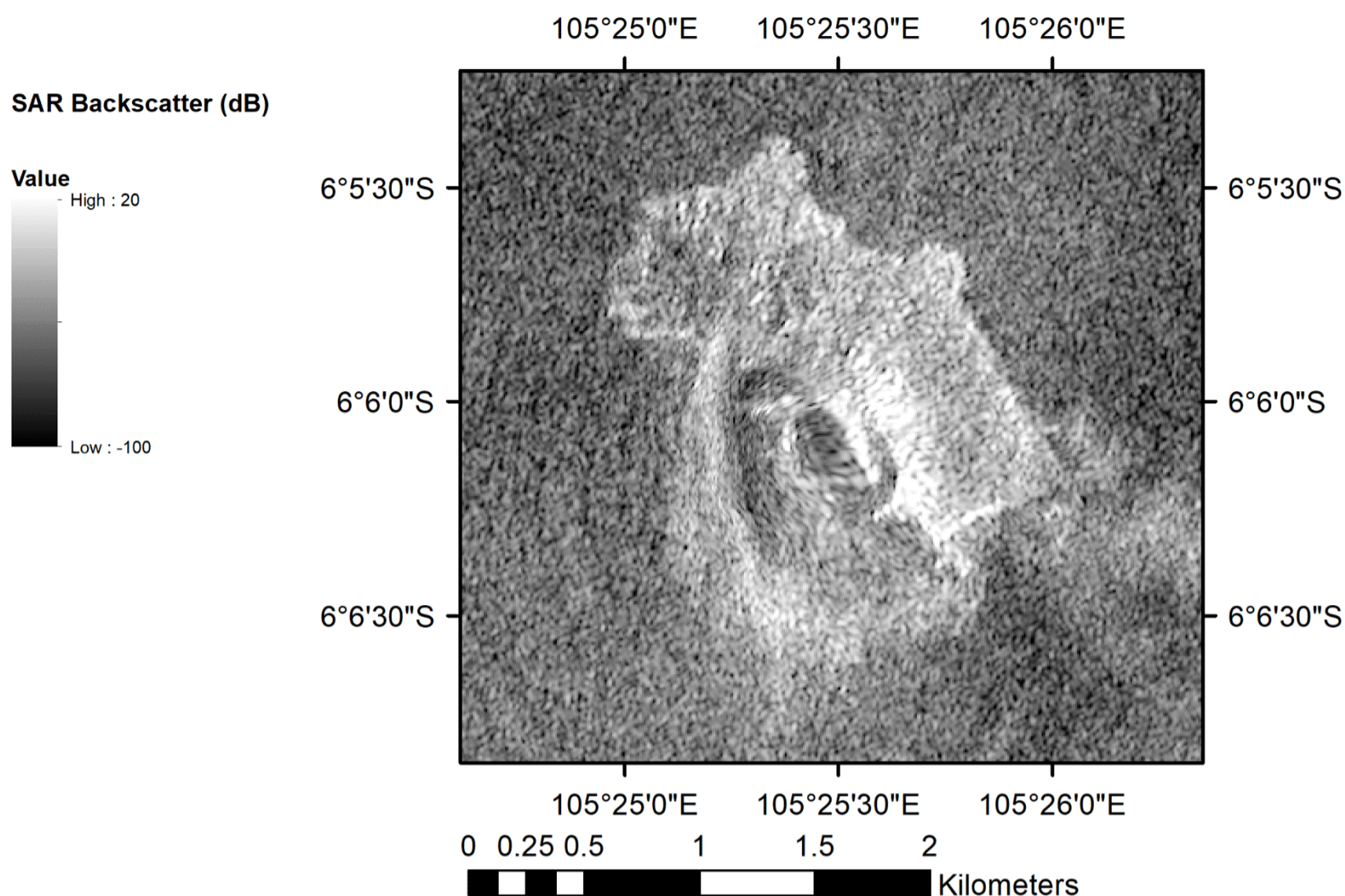
# 19 Nov 2018 – SENTINEL-2 MultiSpectral Instrument (visible)



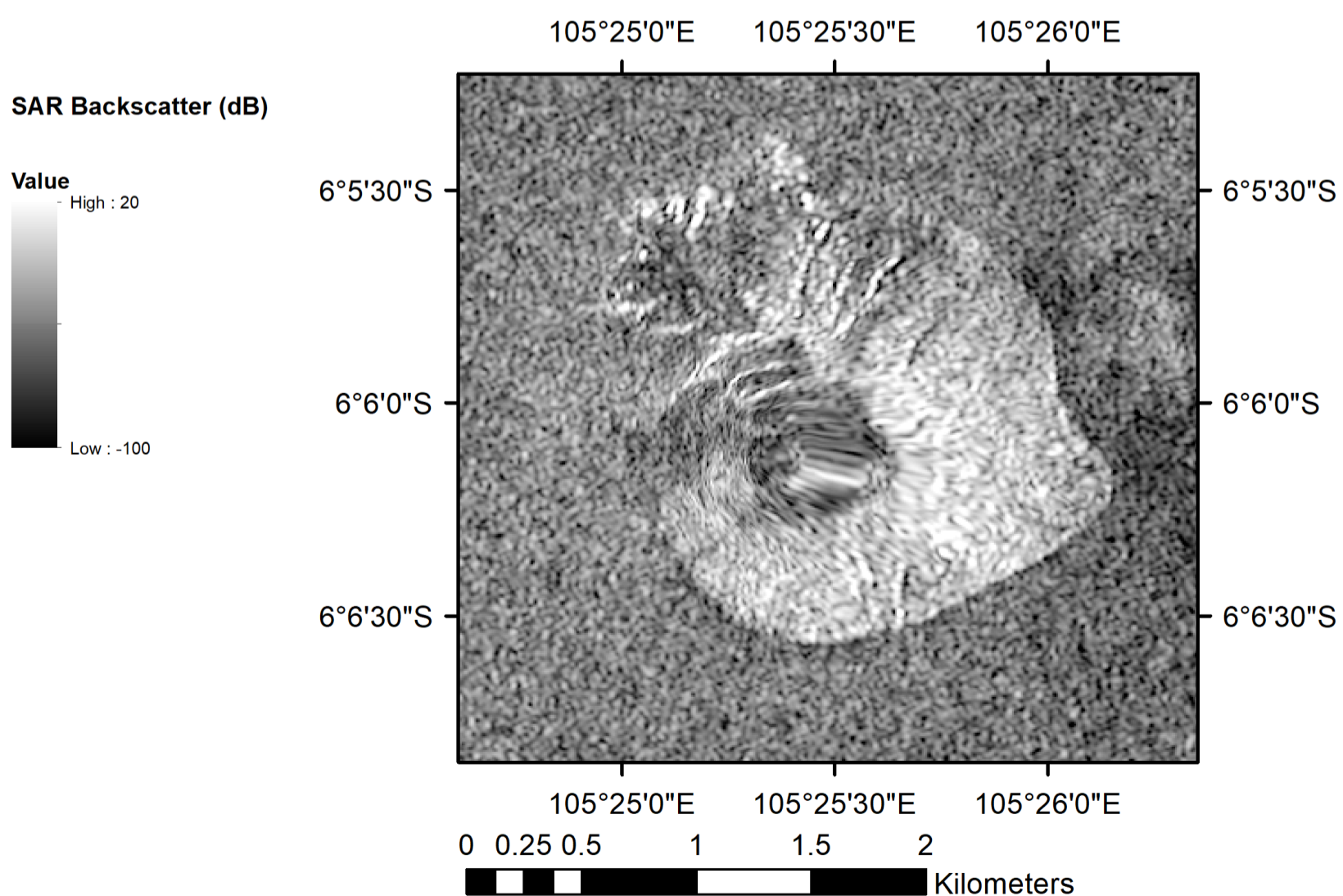
# 10<sup>th</sup> Dec 2018 – SENTINEL-1 C-band SAR



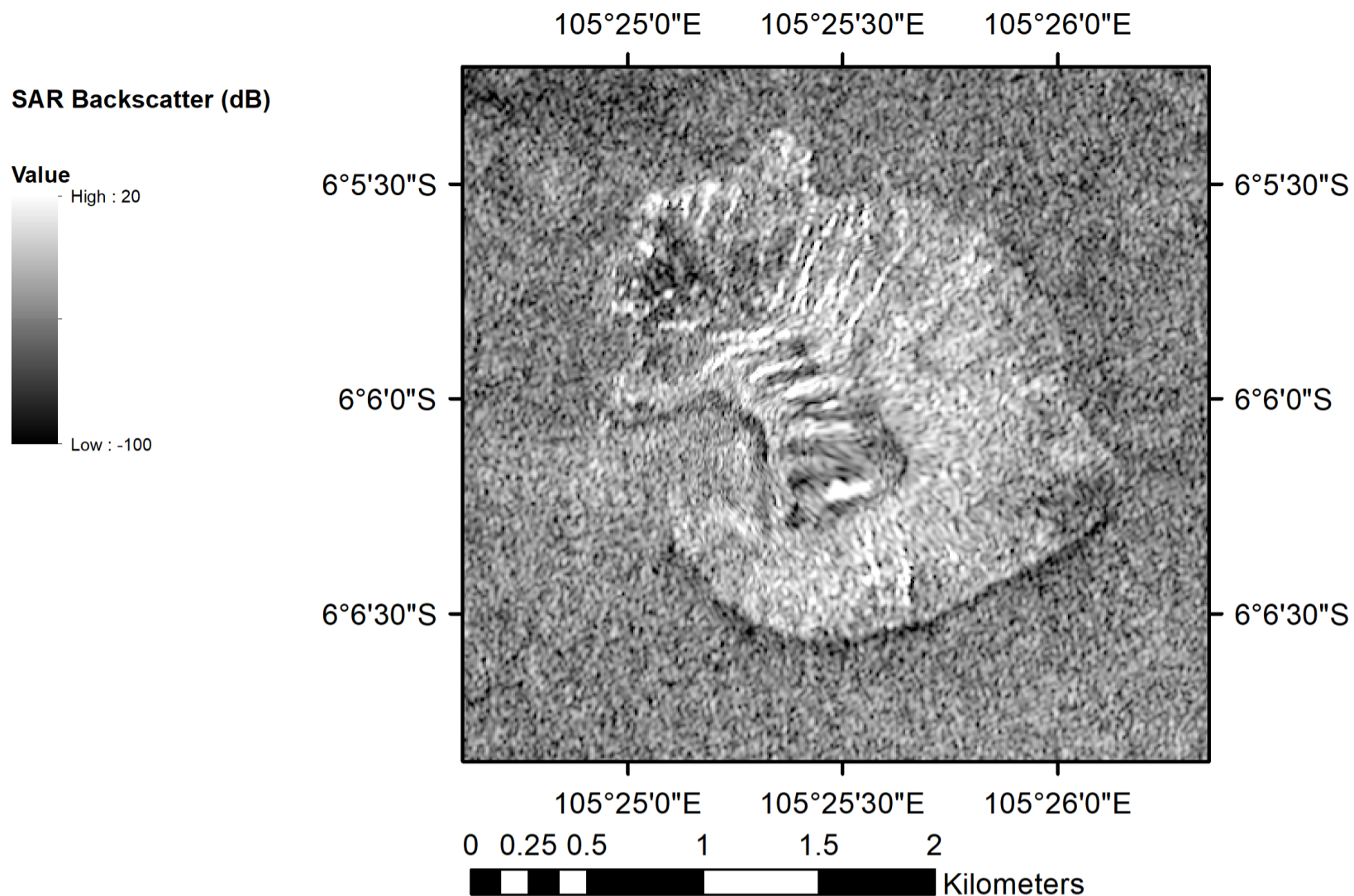
## 22 Dec 2018 (8 hours after tsunami) – SENTINEL-1 C-band SAR



## 25 Dec 2018 – SENTINEL-1 C-band SAR



## 28 Dec 2018 – SENTINEL-1 C-band SAR



## 2 Feb 2019 – SENTINEL-2 MultiSpectral Instrument (visible light)

