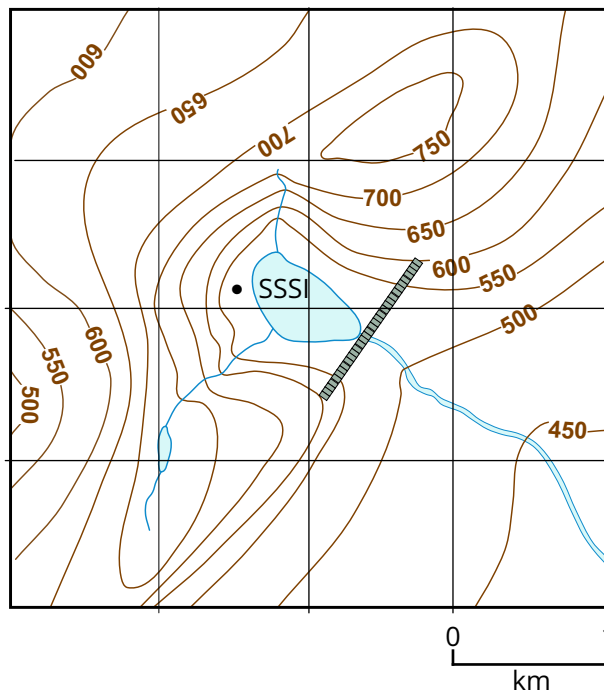
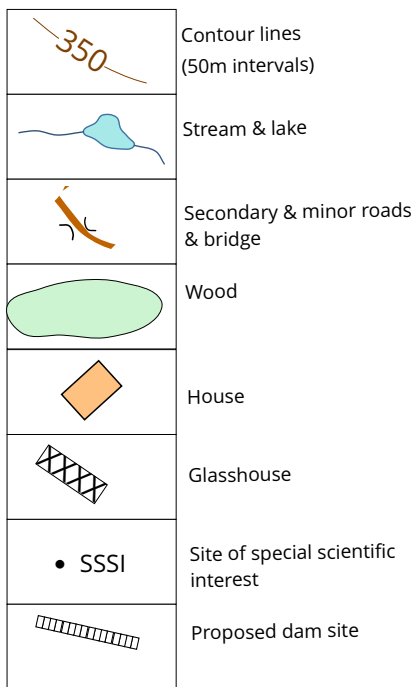
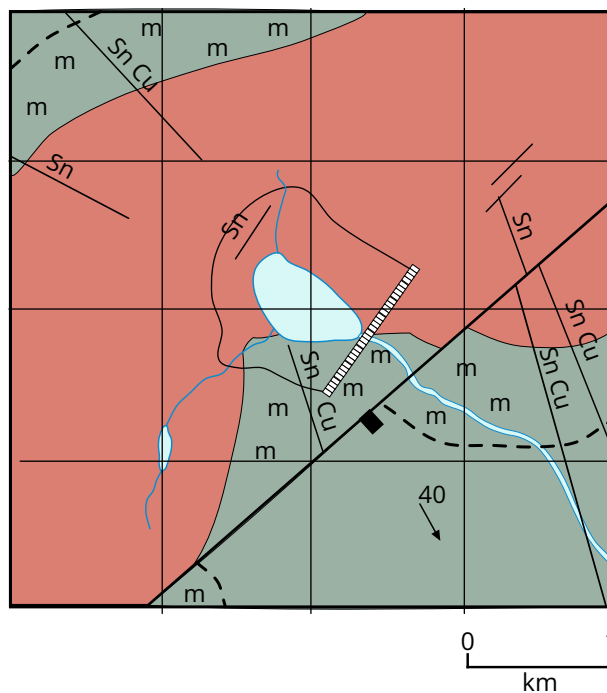
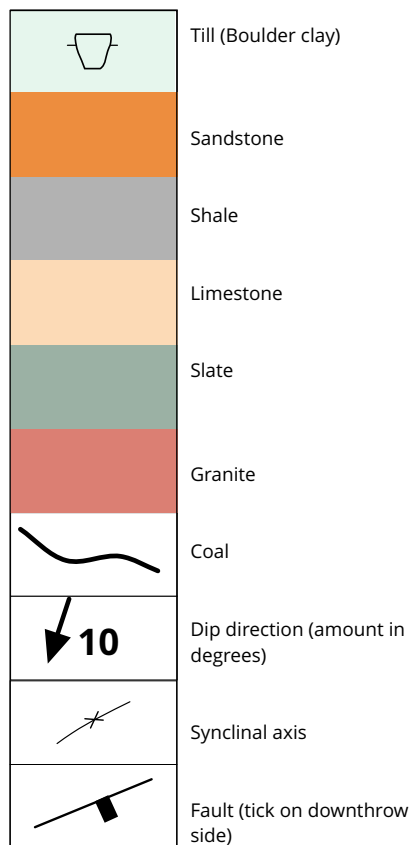


Potential reservoir site A

Topographic features

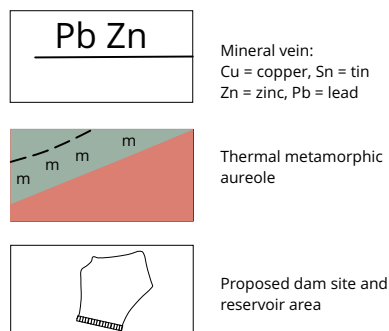


Geological features



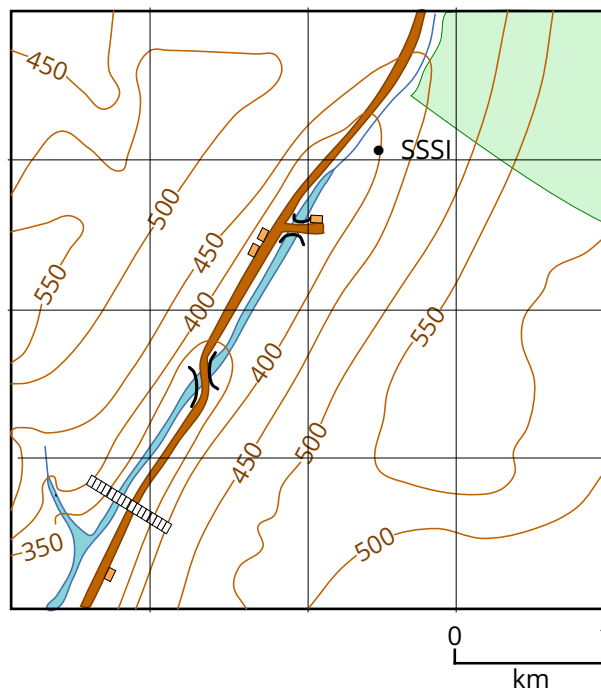
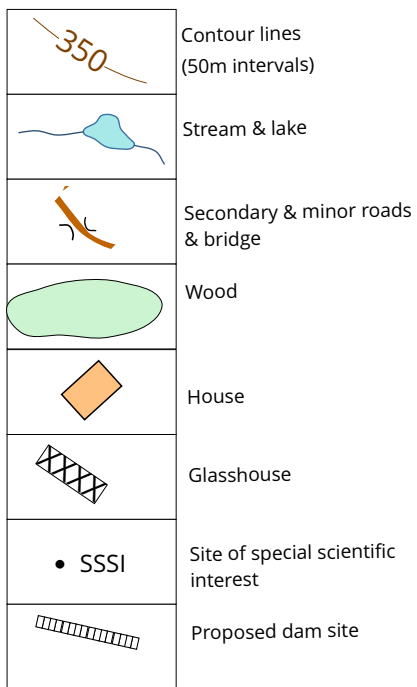
Site A data

Distance from conurbation	112 km
Annual rainfall	2123 mm
Farming types	Sheep. Plan for afforestation held in abeyance.
Geology	Ordovician slates intruded by granite
Points of importance	Rare alpine flora native (i.e. naturally occurring). SSSI - rare flower locality. A 12 km access road will be needed if the reservoir is built on this site.
Reservoir potential	Water supply, hydroelectric.

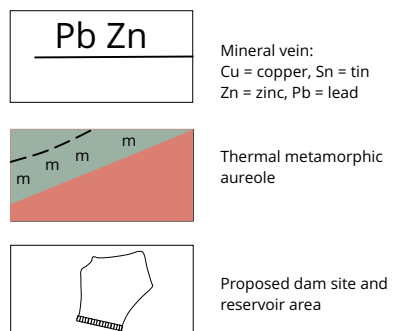
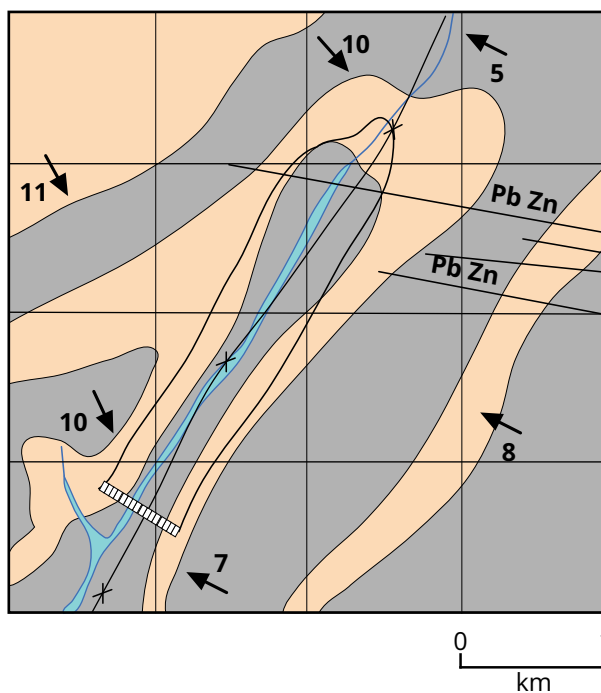
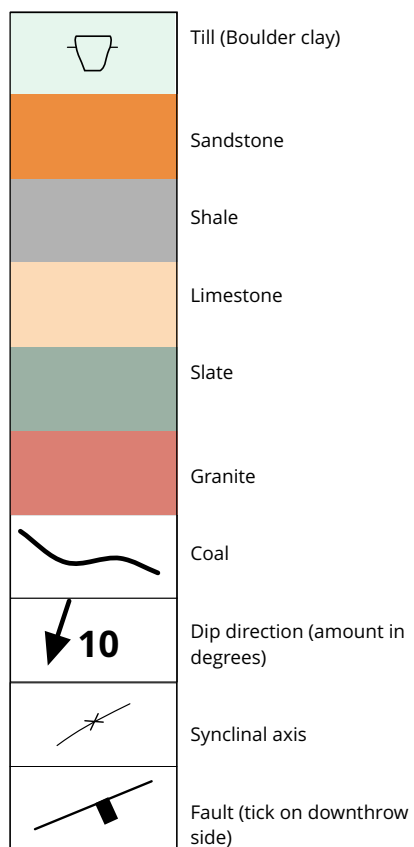


Potential reservoir site B

Topographic features



Geological features

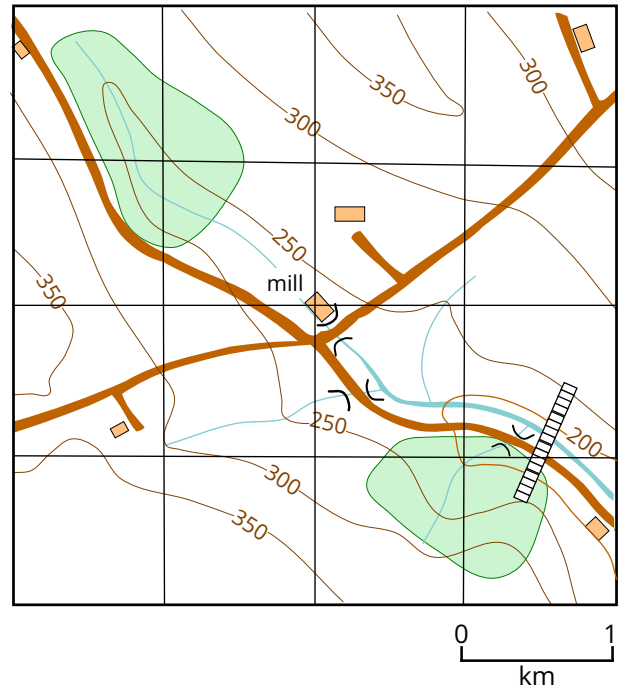
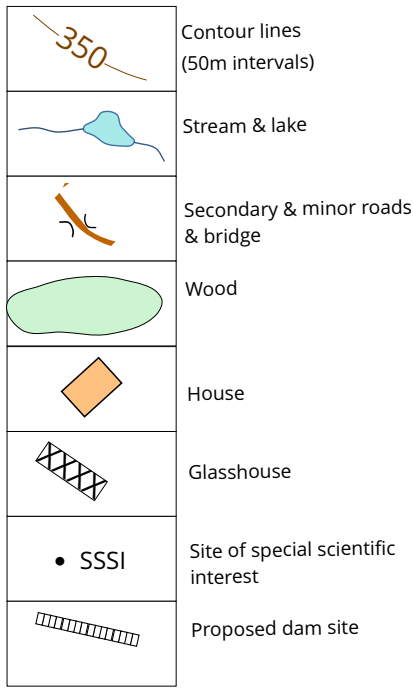


Site B data

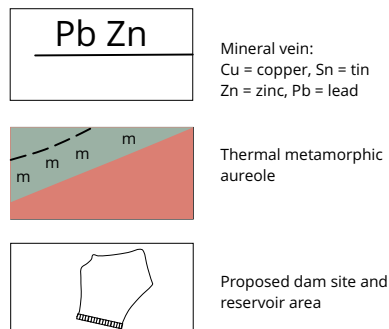
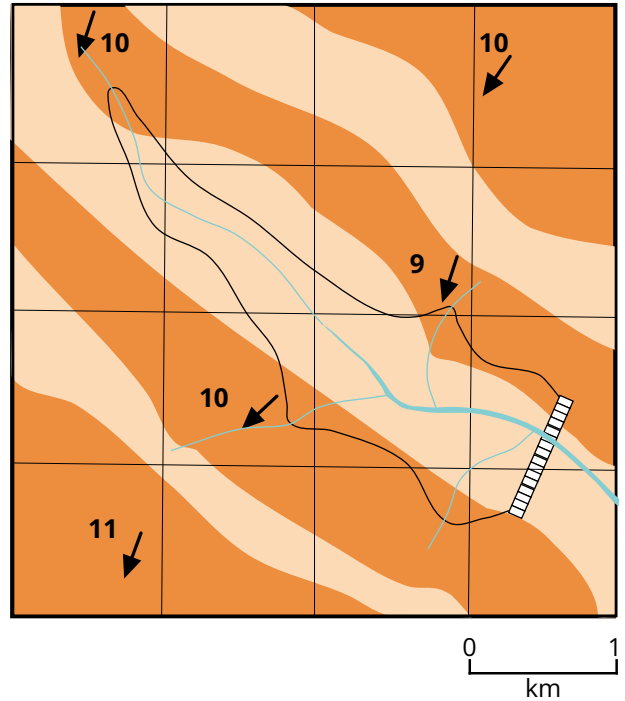
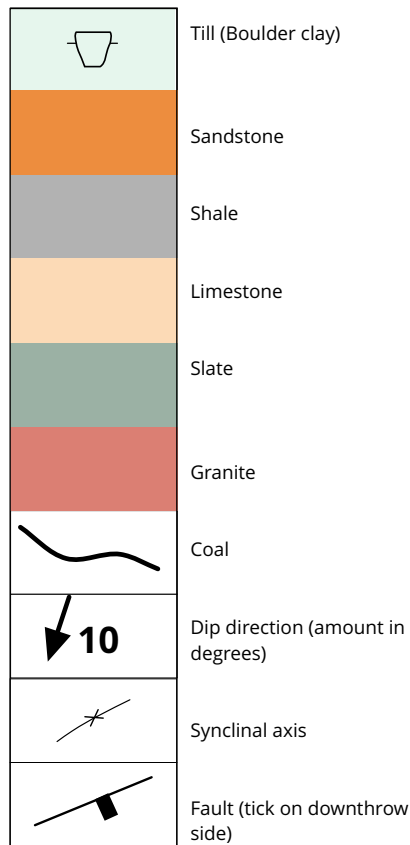
Distance from conurbation	77 km
Annual rainfall	1741 mm
Farming types	Sheep on valley sides, beef and dairy cattle on valley floor
Geology	Syncline in Silurian limestone-shale sequence.
Points of importance	Area inside National Park. SSSI - fossil locality.
Reservoir potential	Water supply, tourism (e.g. sightseeing and fishing).

Prospective reservoir site C

Topographic features



Geological features

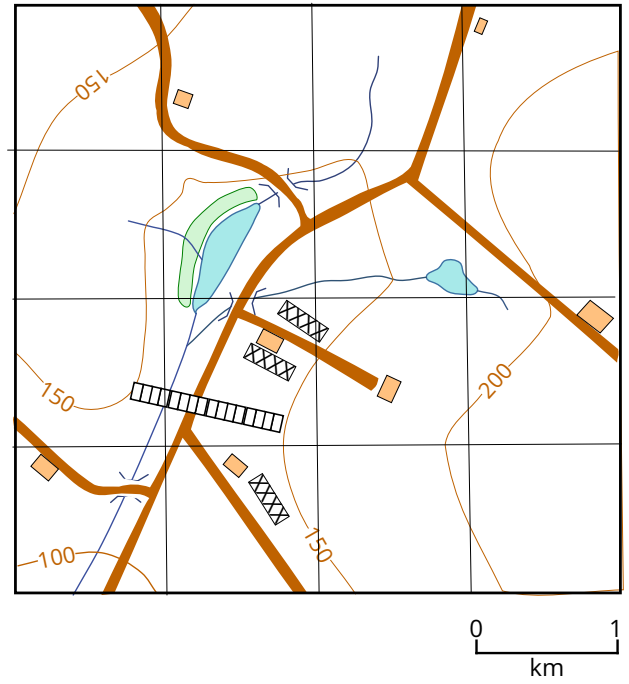
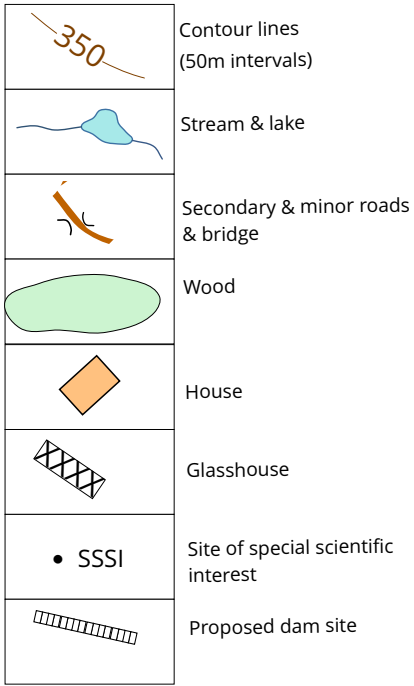


Site C data

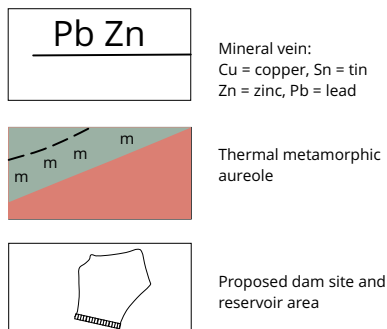
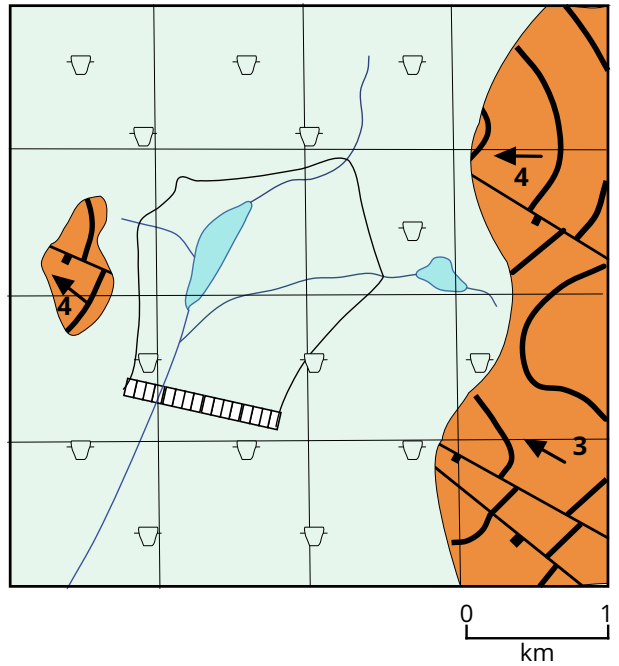
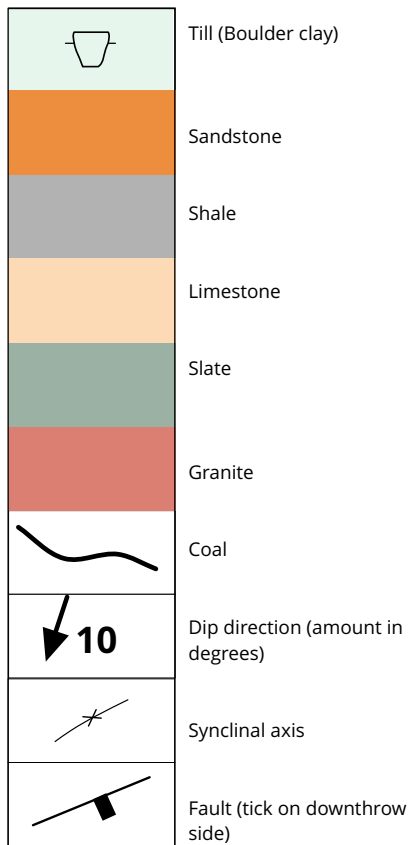
Distance from conurbation	45 km
Annual rainfall	1304 mm
Farming types	Beef, dairy and arable farming.
Geology	Dipping Carboniferous sandstone - shale sequence.
Points of importance	Two areas of ancient natural woodland. 15th century mill.
Reservoir potential	Water supply. Water sport amenity for nearby town, fishing, bird watching.

Prospective reservoir site D

Topographic features



Geological features



Site D data

Distance from conurbation	21 km
Annual rainfall	720 mm
Farming types	Dairy, arable and market gardening.
Geology	Dipping Carboniferous coal measures overlain unconformably by till (boulder clay).
Points of importance	Mereside bird sanctuary. Local wildlife under pressure.
Reservoir potential	Water supply. Water sport amenity for conurbation (fishing and birdwatching).